

FRAME KIT	426
MINI FRAME KIT	439
PRICE HOLDERS	440
HOOKS	458
HOOKS ACCESSORIES	461
HANGING SOLUTIONS	463
SUCTION CUPS	476
GRIPPERS	478
CARDBOARD ACCESSORIES	484
IDENTIFICATION	488

## FRAMES



poster is inserted from the short side



8 colors available










### INFORMATION

This high quality Frames are available in 4 standard sizes and 8 different colors. Ideal for displaying prices or promotions in supermarkets or stores.

#### STANDARD SIZES

FRAME									
12.053	105x148mm	A6	x10						
12.054	148x210mm	A5	x10						

#### STANDARD SIZES

FRAME									
12.055	210x297mm	A4	x10						
12.056	297x420mm	A3	x10						

## POSTER PROTECTOR

EN	Plastic covers, made in 0.3mm "anti-reflective" and transparent glasspack to protect the poster on both sides inside the frame.
FR	Couvertures de protection fabriquées en plastique transparent "antireflet" de 0.3mm pour protéger les images dans les cadres.
PT	Capas protectoras realizadas em glasspack "anti reflexo" transparente de 0.3mm para proteger as impressões dos marcos.
ES	Fundas de plástico, realizadas en glasspack "antireflex", transparente de 0.3mm para proteger la gráfica de los marcos.




transparent sleeves



4 sizes available

### INFORMATION

This transparent anti-reflective covers are 0.3mm thickness and they are available in 4 standard sizes. For protecting your promotions from exposure deterioration.

PROTECTOR	SIZE		
12.057	A6	x20	
12.058	A5	x20	
12.059	A4	x20	
12.060	A3	x10	





## EXTENDABLE FLOOR STAND



Frames not included

**INFORMATION**  
Includes Plastic Base + "T" Clamp + Telescopic Tube. Ideal for placing underneath pallets close to the product.

PLASTIC	SIZE *mm
❁ 12.239	Grey Pole: 150+150 x10
❁ 12.240	Black Pole: 150+150 x10
❁ 12.062	Grey Pole: 300+300 x10
❁ 12.063	Black Pole: 300+300 x10

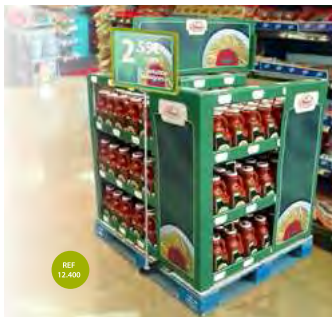
**INFORMATION**  
Includes Plastic Base + "T" Clamp + Telescopic Tube. Ideal for placing underneath pallets close to the product.

PLASTIC	SIZE *mm
❁ 12.065	Grey Pole: 500+500 x10
❁ 12.066	Black Pole: 500+500 x10
❁ 12.242	Grey Pole: 750+750 x10
❁ 12.243	Black Pole: 750+750 x10

**INFORMATION**  
Includes Metallic Base + "T" Clamp + Telescopic Tube. Ideal for placing underneath pallets close to the product.

METALLIC	SIZE *mm
❁ 12.238	White Pole: 150+150 x10
❁ 12.061	White Pole: 300+300 x10
❁ 12.064	White Pole: 500+500 x10
❁ 12.241	White Pole: 750+750 x10





REF  
12.400

**INFORMATION**

This clamp is suitable for pole stands and it is ideal for displaying promotional posters or pricing banners beside the pallets of supermarkets or stores.

PALLET CLAMP	SIZE		
 12.400	250mm	x10	

**CLAMP SUPPORT FOR PALLET**



Frames not included

clamp suitable for pole stands



REF  
12.069

**INFORMATION**

This extendable support is ideal for displaying promotions, temporary sales or for price graphics on wire dumpbins at supermarkets or stores.

SPRING STAND	SIZE		
 12.069	250mm	x10	

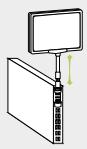
**EXTENDABLE STAND WITH SPRING**



**PEGBOARD APPLICATION**



Also, this support for frame kit is ideal for pegboard thanks to its adjustable spring.



Once incorporated into the pegboard, you can adjust the height of the displaying thanks to its telescopic pole.



EXTENDABLE FLOOR STAND WITH ROUND METAL BASE

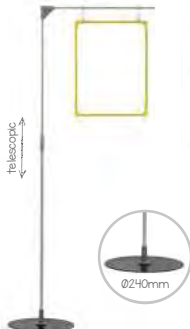


Frames not included

INFORMATION

It includes a Telescopic Pole (1900mm max. height) + Ø240 Round Metal Base + "T" Clamp. Ideal for being placed close to the product at markets.

EXT. STAND	SIZE	*mm
12.068	950+950	x10



INFORMATION

It includes a Telescopic Pole (1900mm max. height) + Ø240 Round Metal Base + Upper arm + Hooks. Ideal for being placed close to the product at markets.

EXT. STAND	SIZE	*mm
12.405	950+950	x10



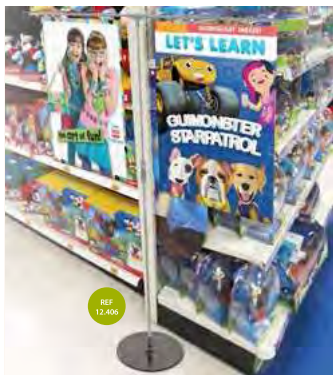
INFORMATION

It includes a Telescopic Polezzt (1900mm max. height) + Ø240 Round Metal Base + "T" Clamp + Upper arm. Ideal for displaying at supermarkets.

EXT. STAND	SIZE	*mm
12.406	Pole: 950+950 Upper Tubes: 500+500	x10



REF 12.068

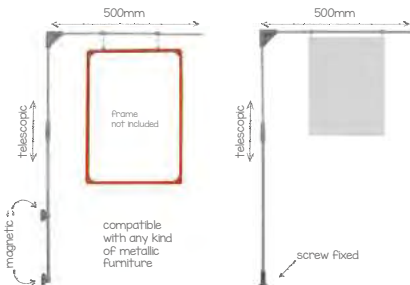


REF 12.406



REF  
12.070

## EXTENDABLE "L" STAND



### INFORMATION

Includes a Telescopic pole + 500mm Upper Arm + 2 Magnetic holders. Compatible with any kind of metallic furniture. Ideal for displaying at markets.

L STAND \*mm

12.070

Pole: 500-500  
Upper Arm: 500

x20

### INFORMATION

It includes a Telescopic pole + 500mm Upper Arm + Screw-in support base. Ideal for being placed close to the product at supermarkets.

L STAND \*mm

12.237

Pole: 500-500  
Upper Arm: 500

x20



\* mm



Ideal for being placed up supermarket gondolas.

## EXTENDABLE "T" STAND



### INFORMATION

"T" Stands includes a Telescopic Pole (1000mm max. height) + Screw-in support + "T" Clamp + Upper Arms + Hooks. Ideal for displaying sales at supermarkets.

EXT. STAND SIZE \*mm

12.075

Pole: 500-500  
Upper Arms: 500-500

x20

# FRAME KIT | Extendable Banners

- EN Various graphic displays for gondola or shelf-systems.
- FR Support pour gondole pour la suspension d'affiches.
- PT Suporte para cartazes em gôndolas e segmentos.
- ES Soportes de cartelería para góndolas y fondos lama.



use hooks for hanging signage



## INFORMATION

Telescopic tube (600mm max.) for Slatwalls. With 2 plastic hooks for holding signage.

## SLATWALL EXTENDABLE BANNER

SLATWALL

SIZE

✱ 12.072

Tube: 300+300mm

x10 



## INFORMATION

Telescopic tube (600mm max.) for Pegboard. With 2 plastic hooks for holding signage.

## UPRIGHT EXTENDABLE BANNER

UPRIGHT

SIZE

✱ 12.073

Tube: 300+300mm

x10 



## INFORMATION

Telescopic tube (600mm max.) for metallic surfaces. With 2 plastic hooks for holding signage and also, 2 magnetic bases for a better fixation.

MAGNET

SIZE



✱ 12.181

300+300mm

x10 

## INFORMATION

Telescopic tube (800mm max.) for metallic surfaces. With 2 plastic hooks for holding signage and also, 2 magnetic bases for a better fixation.

MAGNET

SIZE



✱ 12.231

400+400mm

x10 

## INFORMATION

Telescopic tube (1000mm max.) for metallic surfaces. With 2 plastic hooks for holding signage and also, 2 magnetic bases for a better fixation.

MAGNET

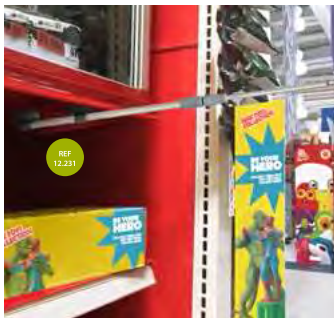
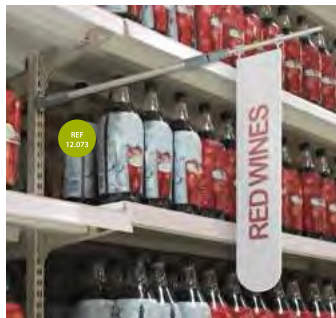
SIZE



✱ 12.300

500+500mm

x10 





POLE HOOK

12.076

x20

POLE HOOK

combine it + "ring clip" (ref. 12.090)



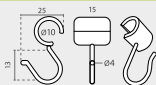
transparent plastic



INFORMATION

\*mm

This transparent plastic hook is perfect for using with Extendable "L" or "T" Stands. You can combine it with "Ring Clip" (ref. 12.090) for hanging a banner at supermarkets.



MINI BOARD

SIZE

12.554

50x60mm

x20

MINI BOARD For Ø10mm TELESCOPIC TUBE

all along the pole



single or double-sided

INFORMATION

\*mm

This Mini Board for Ø10mm telescopic tubes is made in grey ABS. For using with a frame kit. To place the Mini Board at half height of the pole just break the top flap. Thanks to its attachable design, it is ideal to use two facing boards and create a double-sided display for your frame kit.



SUPPORT

12.338

x25

GRAPHIC SUPPORT



±1.5mm card thickness



transparent plastic

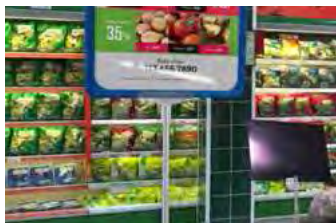
INFORMATION

\*mm

This transparent plastic graphic support is suitable for hanging ±1.5mm max. thickness cards. Ideal for combining it with telescopic tubes for displaying promotions at supermarkets.







T" CLIP	COLOR
✱ 12.077	<input type="checkbox"/> <input checked="" type="checkbox"/> <input type="checkbox"/> <input type="checkbox"/> <input type="checkbox"/>
	x20 

## T" CLIP



### INFORMATION

\*mm



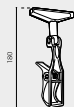
"T" Clip is designed for being combined with Ø10mm telescopic poles, also is suitable for using with any frame. This "T" Clip is available in 4 different colors.



CLAMP	SIZE
✱ 12.291	180mm
	x20 

## CLAMP FOR FRAME KIT

\*mm



transparent plastic

for wire baskets, shelves, etc



### INFORMATION

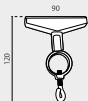
Clamp + "T" clip. Ideal for being used with frames on wire baskets, shelves, etc .



RING "T"	DIAMETER
✱ 12.292	Ø30mm
	x20 

## RING "T" CLIP

\*mm



transparent and white plastic

suitable for pole, basket, grating, etc



### INFORMATION

Adjustable Ring + transparent "T" clip. Suitable for poles, baskets, grating, etc .

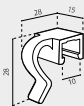


## BASKET CLIP



ideal for displaying promotions in frames

\*mm



transparent and white plastic

### BASKET CLIP

12.084

x20

### INFORMATION

This transparent clip is ideal for connecting frames with wire dumpbins.



## TUBE CLIP



Frame kit connector + tube clip ring



### TUBE CLIP

#### DIAMETER

12.081

Ø18mm

x20

12.082

Ø22mm

x20

12.083

Ø26mm

x20

### INFORMATION

\*mm

Ring with frame connector. This Clip is available in 3 diameters. Ideal for pricing at market islands.

REF 12.081



Ø18

REF 12.082



Ø22

REF 12.083



Ø26



## WALL CLIP



suitable for front attachment

\*mm



### WALL CLIP

12.080


x20

### INFORMATION

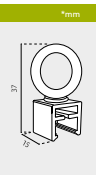
This transparent clip is ideal for connecting frames to wire dumpbins.

REQUEST PRICE FOR LARGE QUANTITY



RING CLIP			
★12.090	x20		

### RING CLIP FOR FRAME



suitable for hanging Frame kit

INFORMATION
This Clip Frame with 360° rotatory ring is ideal for holding frames.



HOOK CLIP	DIAMETER		
★12.091	Ø10mm	x20	

### HOOK CLIP 10mm



suitable for hanging Frame kit



transparent plastic

INFORMATION
This Hook Clip is suitable for hanging frames. Ideal for pricing at supermarkets.



HOOK CLIP	DIAMETER		
★12.092	Ø20mm	x20	

### HOOK CLIP 20mm



transparent plastic



INFORMATION
This Big Hook Clip is suitable for hanging frames. Ideal for pricing at markets.



RAIL CLIP

✦12.089

x20

## RAIL CLIP

\*mm



transparent plastic



Join Frame kit to ceiling-rails

### INFORMATION

This transparent rail clip is suitable for connecting frames to ceiling-rails.



GRIPPER CLIP

✦12.088

x20

## GRIPPER CLIP

\*mm



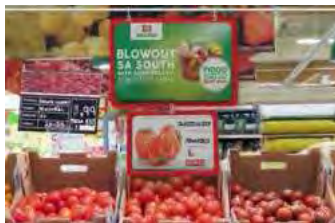
ideal for showcard exhibition



graphic support for frame kit

### INFORMATION

This transparent gripper clip is ideal for attaching a graphic to a frame.



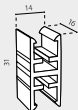
FRAME JOIN

✦12.087

x20

## FRAME JOIN CLIP

\*mm



it allows to join together two frames

### INFORMATION

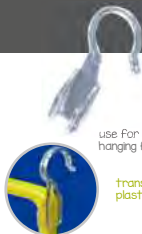
This frame transparent clip is ideal for joining together frames.



SIDE CLIP	DIAMETER	
✳ 12.094	Ø20mm	 x10 Uni  x10 Uni

## FRAME SIDE HOOK

\*mm



use for hanging Frame kit

transparent plastic

### INFORMATION

Clamp + "T" clip. Ideal for being used with frames on wire baskets, shelves, etc.



BASE CLIP	
✳ 12.093	x10 

## FRAME BASE CLIP

\*mm




suitable as base for the Frame kit

transparent plastic

### INFORMATION

This transparent base clip is suitable for displaying support for frames.



FRAME GRIP	
✳ 12.524	x100 

## FRAME KIT GRIPPER

\*mm



suitable for hanging showcards from marco kit

transparent plastic



### INFORMATION

This transparent gripper is ideal for attaching graphic (2mm max.) to a frame.



DIMENSIONS \*mm



## FRAME MAGNETIC SUPPORT

Fix on any metal surface



FRAME MAG.

☆ 12.096

x20 

### INFORMATION

Ideal as magnetic base or holder for frames on gondolas or metallic shelves.

DIMENSIONS \*mm



## MIDDLE TUBE MAGNETIC SUPPORT

Fix on any metal surface



MID MAG.

☆ 12.097

x20 

### INFORMATION

This magnetic clip is suitable as intermediate support for telescopic tubes.

DIMENSIONS \*mm



## END TUBE MAGNETIC SUPPORT

Fix on any metal surface



END TUBE

☆ 12.098

x20 

### INFORMATION

This magnetic clip is suitable as end support for telescopic tubes.

DIMENSIONS \*mm



## CLIP MAGNETIC HANGER

suitable as base for Frame kit



"T" CLIP

☆ 12.099

x20 

### INFORMATION

This magnetic clip is suitable as holder for telescopic frames.

DIMENSIONS \*mm



## "T" MAGNETIC CLIP

suitable as base for Frame kit



CLIP HANGER

☆ 12.079

x20 

### INFORMATION

This magnetic "T" clip is suitable as magnetic base support for frames.





EN	Exhibition graphic system composed by transparent high quality frames and a full range of accessories.
FR	Système d'exposition composé par des cadres transparents de haute qualité et accessoires pour la mise en place.
PT	Sistema de exposição composto por molduras transparentes de alta qualidade e múltiplos acessórios.
ES	Sistema de exhibición de cartelería compuesto de marcos transparentes de alta calidad y accesorios para su empleo.

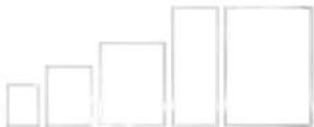


## INFORMATION

These high quality transparent Mini Frames are lightweight and extrafine. Featuring a full range of accessories and 5 sizes available.

FRAMES	SIZE	GRAPHIC SIZE		
12.336	74x105mm	A7	x10 	 
12.322	105x148mm	A6	x10 	
12.323	148x210mm	A5	x10 	
12.324	105x297mm	1/2A4	x10 	
12.325	210x297	A4	x10 	

## TRANSPARENT FRAMES



## INFORMATION

The antireflective transparent protectors for graphics are 0.3mm thickness.

PROTECTOR	SIZE		
12.337	A7	x20 	
12.057	A6	x20 	
12.058	A5	x20 	
12.328	1/2A4	x20 	
12.059	A4	x20 	

## POSTER PROTECTOR

protects your graphic



## MINI CARD CLIP

### INFO

\*mm

Suitable as price holder.



12.332 x20 

## MINI BASE CLIP

### INFO

\*mm

Suitable as base for Mini Frame.



12.333 x20 

## MINI JOIN CLIP

### INFO

\*mm

Suitable for joining Mini Frames.



12.334 x20 

## MINI SIDE HOOK

### INFO

\*mm

Suitable to hang Mini Frames.



12.095 x20   10 uni  10 uni

## MINI HANGING HOOK

### INFO

\*mm

Suitable to hang Mini Frames.



12.335 x20 

EN

Complete range of priceholders and label holder systems which provide an integral solution for the signage exhibition at areas or points of sale.

FR

Large gamme de système de porte étiquette. Solution complète pour l'affichage de posters dans les zones et points de vente.

PT

Ampla gama de preços e suportes de etiquetas que proporcionam uma solução completa para locais ou pontos de venda.

ES

Amplia gama de sistemas para portaprecios y portatiquetas que proporciona una solución integral a la exhibición de cartelera en áreas y puntos de venta.



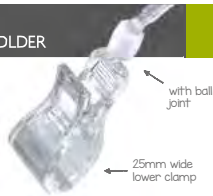




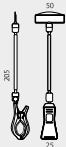
**INFORMATION**

These transparent clamps provide a full angle view thanks to their double movable ball joint. Featuring a 25mm wide lower clamp and an upper clip, clamp or sign holder (depending on model). They are ideal for placing prices near to the product.

**CLAMP PRICE HOLDER**



**C.205** \*mm



✱ 12.009 x25

**C.155** \*mm



✱ 12.008 x25

upper sign holder

**C.95** \*mm



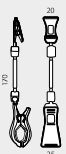
✱ 12.007 x25

**C.90** \*mm



✱ 12.004 x25

**C.170** \*mm



✱ 12.011 x25

**C.110** \*mm



✱ 12.010 x25

**C.100** \*mm



✱ 12.000 x25

**C.110** \*mm



✱ 12.001 x25



REF 12.004



REF 12.001



REF 12.008



REF 12.010



# PRICE HOLDERS | Clamp Sign Clip

## INFORMATION

These transparent clamps provide a full angle view thanks to their double movable ball joint. Featuring a 20mm wide lower clamp and an upper clip, clamp or sign holder (depending on model). They are ideal for holding prices near to the product.

## CLIP PRICE HOLDER



with ball joint

20mm wide lower clamp

### CL.200 \*mm



### CL.150 \*mm



with upper clip

### CL.90 \*mm



### CL.70 \*mm



✱ 12.017 x25 

✱ 12.016 x25 

✱ 12.015 x25 

✱ 12.020 x25 

### CL.180 \*mm

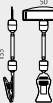


### CL.125 \*mm



upper sign holder

### CL.135 \*mm



### CL.75 \*mm



✱ 12.022 x25 

✱ 12.021 x25 

✱ 12.026 x25 

✱ 12.025 x25 



REF 12.021



REF 12.016



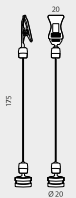
REF 12.015



**INFORMATION**

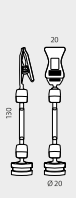
These price holders provide a full angle view (with double movable ball joint). With an upper clip or sign holder and a magnetic or suction cup base to choose from. They are ideal for placing prices near to the product at supermarkets.

**M.175** \*mm



✱ 12.031 x25 

**M.130** \*mm



✱ 12.030 x25 

**MAGNETIC PRICE HOLDER**



**M.70** \*mm



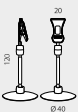
✱ 12.029 x25 

**M.50** \*mm



✱ 12.034 x25 

**M.120** \*mm



✱ 12.046 x25 

**M.60** \*mm



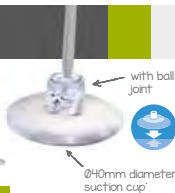
✱ 12.045 x25 

**SUCTION PRICE HOLDER**

**M.50** \*mm



✱ 12.048 x25 





# PRICE HOLDERS | Base Sign Clip



## Ø55mm BASE PRICE HOLDER



**\*mm**

20

160

Ø55

with ball joint

**\*mm**

20

50

Ø55

with ball joint

✱ 12.040 x25

✱ 12.039 x25



## ADHESIVE PRICE HOLDER



Ø27mm adhesive base

with ball joint

**INFORMATION**

**\*mm**

20

55

Ø27

This transparent price holder features a 20mm wide upper clamp with movable ball joint and a lower Ø27mm diameter white adhesive base. They are ideal for placing prices near to the product.

✱ 12.042 x25



## Ø90mm BASE PRICE HOLDER

Ø90mm diameter base

**INFORMATION**

With double movable ball joint this Ø90mm base (transparent or yellow) is ideal for placing prices near to the product without the need of holding the price-holder. Perfect for displaying bakery, fruit or for shelving promotions at the supermarkets.

**\*mm**

20

160

Ø90

**\*mm**

20

155

Ø90

✱ 12.036 x25

✱ 12.037 x25

**\*mm**

80

150

Ø90

**\*mm**

50

140

Ø90

✱ 12.035 x25

✱ 12.038 x25






INFORMATION

These telescopic price holders provide a high angle view thanks to its telescopic steel tube. With 2 upper clips made of transparent plastic for holding promotions and a sturdy flat base for placing under the products. The telescopic pole allows the possibility of placing the prices closer to the product. The change of promotion is really simple and fast and takes only few seconds. They are ideal for placing "banner" promotions, special offers or prices over the food or products at the supermarkets.

TELESCOPIC PRICE HOLDER



<p><b>*mm</b></p> <p>210 240-800 135 135</p> <p>Telescopic</p>	<p><b>*mm</b></p> <p>310 500-700 135 135</p> <p>Telescopic</p>	<p><b>*mm</b></p> <p>260 340-620 Ø160</p> <p>Telescopic</p>
<p>CLIP 210</p> <p>✱12.050 Max.height:800mm x10 </p>	<p>CLIP 310</p> <p>✱12.051 Max.height:700mm x10 </p>	<p>CLIP 260</p> <p>✱12.052 Max.height:620mm x10 </p>

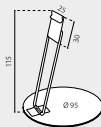


HINGED PRICE HOLDER

INFORMATION

\*mm

This hinged price holder provides an adjustable angle view thanks to its hinged steel holder. With an upper clip for holding sign and a sturdy Ø95mm flat steel base. This stylish price holder is ideal for placing informative notes or special offers near the products, food, bakery, fruits or for shelving promotions at the supermarkets.



suitable for food use


stainless steel

with adjustable angle

ideal as cabinet ticket holder



HINGED HOLDER

✱12.519 x10 



# PRICE HOLDERS | Base Price Holder

## STRAIGHT BASE PRICE HOLDER



### INFORMATION

\*mm

Ideal for informative notes, menus or prices closer to the promotion. It features a straight clip price holder.



### STRAIGHT

#### SIZE

\*12.208 40x60mm x100 

## ANGULAR BASE PRICE HOLDER



### INFORMATION

\*mm

Ideal for informative notes, menus or prices closer to the promotion. It features an angular clip price holder.



### ANGULAR

#### SIZE

\*12.459 40x60mm x100 

## SQUARE BASE PRICE HOLDER



### INFORMATION

\*mm

Ideal for informative notes, menus or prices closer to the promotion. It features a squared clip base holder.



### SQUARE

#### SIZE

\*12.460 49x47mm x100 

### INFORMATION


\*mm

This transparent holder provides a sturdy adhesive fastening. It features a 60mm width clip ideal for displaying cards near to the product or goods. Perfect for shelving promotions and offers at the supermarkets.



### SIGN PRICE

#### SIZE

\*12.339 60x20mm x25 

## SIGN PRICE HOLDER



with adhesive  
foam base



## CROCOCUBES



suitable for  
food use

silver or  
black finish

### CROCOCUBE

#### SIZE

\*17.038  24x24x170mm x5 \*17.039  24x24x170mm x5 

REQUEST PRICE FOR LARGE QUANTITY

## ROD HOLDER



3 heights available



ROD HOLDER	HEIGHT	
50.820	155mm	x50
50.821	110mm	x50
50.822	55mm	x50

multiple combinations

## LABEL SYSTEM

### INFORMATION

This price-holder system provides different bases, price card connections, or adapter for shelving. Thanks to its multiple combinations, the Label System is ideal for pricing near the products.



## CARD CLIP



suitable for holding graphics

CARD CLIP	SIZE	
50.823	18x21mm	x50

## LABEL BASE



BASE	SIZE	
50.810	120x80mm	x50

## SNAIL CLIP



SNAIL CLIP	SIZE	
50.825	45x65mm	x25

## CASSETTE CONNECTOR



CONNECTOR	SIZE	
50.828	25x10x7mm	x50

## ROD HOLDER CONNECTOR



ROD HOLDER	SIZE	
50.824	20x12mm	x50

## MULTI SUPPORT BASE



white colored

## CONNECTOR MULTI BASE - ROD



use with rod holders

## EXTENSION STICK



∅8mm

use with base multi-support ref: 50800

### INFORMATION

Featuring a white base ideal for displaying cards near to the product. Perfect for shelving promotions and offers at the supermarkets.



MULTI BASE	SIZE	
50.800	130x68x32mm	x50

CONNECTOR	SIZE	
50.829	24x10x9mm	x50

EXT-STICK	LENGTH	
50.801	125mm	x50
50.802	150mm	x50
50.803	200mm	x50

### PIN LABEL HOLDER



**INFORMATION** \*mm

This white pin is ideal for gardening or as price holder at supermarkets.



PIN	SIZE
✿ 12.462	38x56mm x100

### SPIKE LABEL HOLDER



**INFORMATION** \*mm

White Spike available on 2 label sizes. Ideal for the supermarkets.



SPIKE	LABEL SIZE
✿ 12.209	60mm x100
✿ 12.210	80mm x100

### LONG PIN LABEL HOLDER



**INFORMATION** \*mm

Long pin ideal for gardening or as price holder at supermarkets.



LONG PIN	LENGTH
✿ 12.461	175mm x100

### SHARP PIN



**INFORMATION**

This white pin is ideal for butchers or supermarkets.

SHARP PIN	SIZE
✿ 50.826	85x22mm x50

### ICE PIN



**INFORMATION**

Transparent pin ideal for fishmongers or supermarkets.

ICE PIN	SIZE
✿ 50.827	185x22mm x50

### STEM PIN

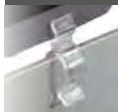


**INFORMATION**

White pin ideal for quick-frozen or supermarkets.

STEM PIN	SIZE
✿ 50.830	155x19mm x50

### CLIP LABEL HOLDER



**INFORMATION**

Transparent Clip Holder suitable for attaching cards, promotion adding, etc.

CLIP LABEL	LENGTH
✿ 12.211	40mm x100

### RING LABEL HOLDER



**INFORMATION**

Transparent Ring Holder ideal for attaching prices and offers to the bottles.

RING LABEL	DIAMETER
✿ 12.296	Ø40mm x100



### CURVED STOPPER CLIP HOLDER



#### INFORMATION

This Curved Clip is ideal for attaching cards and being used as promotion Stoppers on shelving.

STOPPER	SIZE
✱ 12.474	41x46mm x100 

### STRAIGHT STOPPER CLIP HOLDER



#### INFORMATION

This Curved Clip is ideal for attaching cards and being used as promotion Stoppers on shelving.

STOPPER	SIZE
✱ 12.071	40x15mm x100 

### CLIP 39mm DATA STRIP



#### INFORMATION

This 48mm length Clip with hook is ideal for being used on data strips at point of sale.


STRIP	SIZE
✱ 12.451	15x48mm x100 

### SHELF LABEL HOLDER



#### INFORMATION

Transparent Holder ideal for attaching labels on shelving. It fits 4 sizes of labels.

SHELF LABEL	SIZE
✱ 12.414	78x152mm x50 
✱ 12.417	78x203mm x50 
✱ 12.419	106x152mm x50 
✱ 12.421	106x203mm x50 

### HANGING LABEL HOLDER



#### INFORMATION

This Label Holder features a 120x39mm card holder and 2 plastic hangers. This label is ideal for promotion or as pricing holder for rods.

HANG LABEL	GRAPHIC SIZE
✱ 12.295	120x39mm x50 

### SHELF STRIP LABEL HOLDER



#### INFORMATION

This transparent holder is ideal for being used for pricing at supermarkets.

STRIP LABEL	SIZE
✱ 12.458	14x25mm x100 

### STOPPER SLEEVE HOLDER



#### INFORMATION

This transparent Sleeve Clip Holder is ideal for being used as a stopper support.

SLEEVE	SIZE
✱ 12.527	215x112mm x20 

# PRICE CARDS | Price Cards

**EN** Selection of several model, sizes and colors of price cards in order to highlight products at the point of sale.

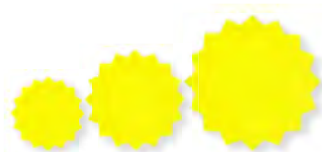
**FR** La sélection de plusieurs modèles, tailles et les couleurs de cartes des prix pour mettre en évidence des produits au point de vente.

**PT** Gama de cartolinas com diferentes formas, cores e tamanhos.

**ES** Selección de varios modelos, tamaños y colores de tarjetas para precio con el fin de destacar los productos en el punto de venta.



## COLORED PRICE CARDS



YELLOW	COLOR	SIZE	
17.034Y		85x85mm	x10
17.035Y		115x115mm	x10
17.036Y		160x160mm	x10

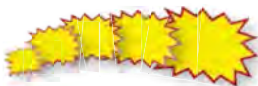
GREEN	COLOR	SIZE	
17.034G		100x75mm	x10
17.035G		145x105mm	x10
17.036G		190x145mm	x10



PINK	COLOR	SIZE	
17.034P		100x75mm	x10
17.035P		145x105mm	x10
17.036P		190x145mm	x10

ORANGE	COLOR	SIZE	
17.034O		100x70mm	x10
17.035O		145x100mm	x10
17.036O		190x145mm	x10

## SQUARE STAR



SQUARE STAR		SIZE	
17.000	S	100x70mm	x10 🌟
17.001	M	135x100mm	x10 🌟
17.002	L	160x160mm	x10 🌟
17.003	XL	185x130mm	x10 🌟
17.004	XXL	240x180mm	x10 🌟

## "NEW" STAR



"NEW" STAR		SIZE	
17.010	S	90x65mm	x10 🌟
17.011	M	140x100mm	x10 🌟
17.012	L	165x130mm	x10 🌟
17.013	XL	190x135mm	x10 🌟
17.014	XXL	250x175mm	x10 🌟

## "V" EXPLOSION



EXPLOSION		SIZE	
17.005	S	95x70mm	x10 🌟
17.006	M	140x95mm	x10 🌟
17.007	L	150x120mm	x10 🌟
17.008	XL	190x135mm	x10 🌟
17.009	XXL	230x170mm	x10 🌟

## "V" STAR



STAR		SIZE	
17.020	S	100x80mm	x10 🌟
17.021	M	140x100mm	x10 🌟
17.022	L	165x135mm	x10 🌟
17.023	XL	190x130mm	x10 🌟
17.024	XXL	240x180mm	x10 🌟

## YELLOW "OK" CLOUD



YELLOW "OK"		SIZE	
17.015	S	100x70mm	x10 🌟
17.016	M	140x100mm	x10 🌟
17.017	L	165x120mm	x10 🌟
17.018	XL	190x150mm	x10 🌟
17.019	XXL	245x175mm	x10 🌟

## RED "OK" EXPLOSION



RED "OK"		SIZE	
17.025	S	95x80mm	x10 🌟
17.026	M	130x110mm	x10 🌟
17.027	L	155x120mm	x10 🌟
17.028	XL	180x145mm	x10 🌟
17.029	XXL	230x175mm	x10 🌟



# SHelf PRICE HOLDERS | Shelf Label Holders

## ADHESIVE COUPON LABEL HOLDER



### INFORMATION

This coupon holder has a resistant back adhesive strip. 2 thicknesses available, 8mm for 75 coupons (115g paper) or 18mm for 125 coupons (115g paper). Ideal for promoting at supermarkets shelves.



ADHESIVE	THICKNESS	
✱ 12.212	8mm	x20 
✱ 12.214	18mm	x20 


## GRIPPER COUPON LABEL HOLDER



### INFORMATION

This coupon holder features a back gripper for attaching to the front of the shelves. 2 thickness: 8mm for 75 coupons (115g paper) or 18mm for 125 coupons (115g paper). Ideal for promoting at markets shelves.



GRIPPER	THICKNESS	
✱ 12.213	8mm	x20 
✱ 12.215	18mm	x20 

## FRONT CLIP LABEL HOLDER



### INFORMATION

This white snail clip is ideal for the communication on shelves, it has several applications thanks to its flexible long clip and its front adhesive. Ideal to compose long displays using more than one clip.

FRONT CLIP	SIZE	
✱ 12.232	30x70mm	x20 

## STOPPER BANNER


85mm high arm holder



### INFORMATION

This transparent stopper for shelves has a straight holed 85mm arm holder with 4 spurs for attaching the graphics. Ideal for supermarkets shelves. Clip for attaching to shelf is not included.



STOPPER	HEIGHT	
✱ 12.222	85mm	x50 

## 3 POSITIONS STOPPER BANNER


3 positions



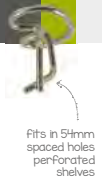
### INFORMATION

This transparent stopper for shelves has a 3 position arm holder which has 6 spurs for attaching the graphics. Ideal for supermarkets shelves. Clip for attaching to shelf is not included.



POSITIONS	SIZE	
✱ 12.223	145mm	x50 

## CLIP BANNER CONNECTOR



### INFORMATION

This clip connector is suitable for being used with Stopper Banner and 3 Position Stopper Banner, it connects the stopper to the shelf. Ideal to secure stoppers to the shelves quickly and safely

CLIP	SIZE	
✱ 12.224	18mm	x100 

REQUEST PRICE FOR LARGE QUANTITY

**EN** The Wobblers highlight the messages by allowing to give swinging and separation effects. They are ideal to encourage points of sale and they fit into any kind of support.

**FR** Les Wobblers permettent d'afficher des messages, car ils créent un effet d'oscillation et de séparation. Idéal dans les points de ventes et s'adapte dans tous milieu.

**PT** Os wobblers realçam as mensagens porque criam um efeito oscilante e de separação. São ideais para destacar os pontos de venda e adaptam-se a qualquer tipo de suporte.

**ES** Los Wobblers resaltan los mensajes gracias a que permiten dar efectos oscilantes y de separación. Resultan ideales para animar los puntos de venta y se adaptan a cualquier soporte.

## INFORMATION \*mm



TRANSPARENT	SIZE	AOH
12.203	15x150mm	x200
12.225	15x200mm	x200

## ALUMINIUM WOBBLER

### INFORMATION \*mm



With adhesive foam pads. 2 sizes.

### STRAIGHT LENGTH AOH

12.204	75mm	x100
12.205	150mm	x100

## SPRING WOBBLER

### INFORMATION \*mm

This Wobbler has a strong spring which allows movement of signage. Also, it has 2 squared 20x20mm adhesive foam pads.



### SPRING SIZE AOH

12.206	20x20x40mm	x100
--------	------------	------

## TRANSPARENT WOBBLER

LARGE QUANTITY DISCOUNT



### INFORMATION

This transparent wobbler gives animation to your signage and increases the impact of your displays. 150mm or 200mm length available. With adhesive.

## ALUMINIUM "ROUND" WOBBLER

### INFORMATION \*mm



This wobbler has adhesive foam rounded pads.

### ROUND LENGTH AOH

12.294	89mm	x100
--------	------	------

## SPACER WOBBLER

### INFORMATION \*mm

The spacer wobbler adds an extra spacing effect to signage or display. Also, it has 2 adhesive foam pads.



### SPACER SIZE AOH

12.207	13x26x17mm	x100
--------	------------	------





# SHELF PRICE HOLDERS | Shelf Base Holders

## MAGNETIC CORNER BASE




### INFORMATION

\*mm

This system of magnetic profile for shelves is composed by a corner base (2 colors available) and a gripper profile (guide or gripper available) where the graphics or promotion cards are inserted. This versatile system is ideal to create promotions on shelves at supermarkets.







CORNER BASE		WIDTH		
	12.220	58mm	x20	
	12.221	58mm	x20	

## GRIPPER PROFILE FOR MAGNETIC CORNER BASE



GRIPPER PROFILE	LENGTH		
	12.218	300mm	x20 
	12.219	460mm	x20 



GRIPPER PROFILE	LENGTH		
	12.216	300mm	x20 
	12.217	460mm	x20 

## MAGNETIC CLIP

max graphic thickness: 8mm



This Magnetic Clip thanks to its great fixation is ideal for promoting on shelves.

MAGNETIC CLIP	SIZE		
	12.078	53x43mm	x50 

## ADHESIVE CLIP



### INFORMATION

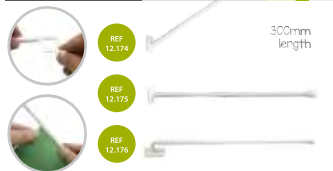
This adhesive clip is ideal for attaching on shelves.

multipurpose adhesive clip

ADHESIVE CLIP	SIZE		
	12.134	25x25mm	x100 

REQUEST PRICE FOR LARGE QUANTITY

## MINI FLAG POLE



REF 12.174

300mm length

REF 12.175

REF 12.176

### INFORMATION

300mm white flag pole with adhesive removable base. Available on 3 angles for displaying.

MINI FLAG	ANGLE	LENGTH		
✱ 12.174	60°	300mm	x50	
✱ 12.175	90° wall	300mm	x50	
✱ 12.176	180° shelf	300mm	x50	

## MINI FLAG POLE WITH RING CLIPS



REF 12.177

300mm length

REF 12.178

REF 12.179

### INFORMATION

300mm flag pole with adhesive removable base and clips for hanging graphics. 3 angles.

MINI RING FLAG	ANGLE			
✱ 12.177	60°		x50	
✱ 12.178	90° wall		x50	
✱ 12.179	180° shelf		x50	

## 60° FLAG POLE

### INFORMATION

\*60 flag pole with adhesive 115x50mm base. Flag can be inserted into the slot  3 lengths.

60° FLAG POLE	ANGLE	LENGTH		
✱ 12.297	60°	280mm	x20	
✱ 12.299	60°	400mm	x20	
✱ 12.289	60°	600mm	x20	

## 90° FLAG POLE

### INFORMATION

\*90 flag pole with adhesive 115x50mm base. Flag can be inserted into the slot  3 lengths.

90° FLAG POLE	ANGLE	LENGTH		
✱ 12.298	90°	280mm	x20	
✱ 12.288	90°	400mm	x20	
✱ 12.290	90°	600mm	x20	

## MAGNET BANNER SUPPORT

### INFORMATION

300mm flag pole with reinforced magnetic base. Ideal for shelving at supermarkets.

MAG. BANNER	LENGTH			
✱ 12.173	300mm		x10	

## ADHESIVE BANNER SUPPORT

### INFORMATION

300mm flag pole with double adhesive pads base. Ideal for shelving at supermarkets.

ADH. BANNER	LENGTH			
✱ 12.180	300mm		x20	



# SHELF PRICE HOLDERS | Shelf Magnet Base Holders



## INFORMATION

This magnetic shelf holder system features multiple solutions to the implementation of graphic promotions to metal shelves. The base is made of ABS with a magnet inside, it sizes 40x70mm, also it can be rotated to adjust exposure to optimal angle. To adjust the pole angle to the desired exposure, simply detach the base slightly from the angle bracket **2**, adjust the pipe to the proper angle **3**, and return the base to its original position so that it is secure **4**. The aluminum pole offers the possibility of approaching the promotion to the passerby and has several options to hang different sizes of graphics, including transparent movable hooks, transparent movable clips or grippers for attaching posters or promotions. Either to be used on or below the shelf, several models are available to meet your needs. This multi-position holder system is often used on metallic shelves, poles or walls, so it is widely used in shopping malls specially in shopping center, supermarket aisles or pharmacies.

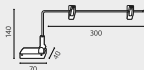


## CLAMP ANGLED MULTISHELF BASE



## INFORMATION

This multi-position holder system features 2 transparent clamps and an angled pole which is ideal to get an extra separation from the product.



ANGLED

12.302

x10

## CLAMP STRAIGHT MULTISHELF BASE



## INFORMATION

This multi-position holder features 2 transparent clamps and a straight pole which is ideal for occupying as little space as possible on the shelf.



STRAIGHT

12.303

x10





400 HOOK

 12.381	x10 
--	---

### 400mm HOOK MULTISHELF BASE

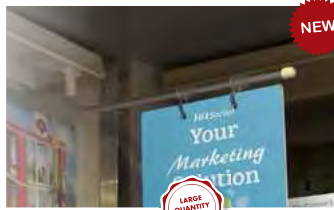


with 2 hooks



#### INFORMATION

This multi-position holder features 2 transparent hooks and a curved 400mm pole which is ideal for being used onto or beneath the shelves.



300 HOOK

 12.555	x10 
--	---

### 300mm HOOK MULTISHELF BASE

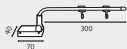


with 2 hooks



#### INFORMATION

This multi-position holder features 2 transparent hooks and a curved 300mm pole which is ideal for being used onto or beneath the shelves.



GRIPPER

 12.511	x2 
--	--

### GRIPPER MULTISHELF BASE

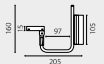


with gripper



#### INFORMATION

This multi-position promotion holder features 1 transparent gripper for attaching graphics and a curved pole which is ideal for being used on walls, poles or onto-beneath the shelves.





# HOOKS | Cardboard Hooks | Prongs

EN Heavy-duty plastic hooks and prongs for cardboard displays.

PT Diferentes tipos de gancho em plástico para expositores em cartão.

FR Divers types de broches pour fixer directement au carton.

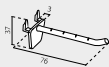
ES Diferentes tipos de ganchos de plástico para colocar sobre cartón.



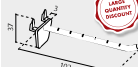
## SIMPLE OR DOUBLE QUICK-STICK PRONG



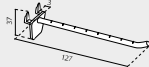
✱ 12.261 51mm x50 



✱ 12.262 76mm x50 



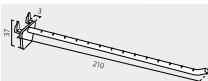
✱ 12.263 102mm x50 



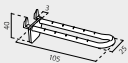
✱ 12.264 127mm x50 



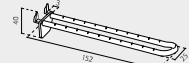
✱ 12.265 153mm x50 



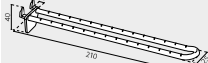
✱ 12.266 210mm x50 



✱ 12.258 105mm x50 



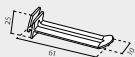
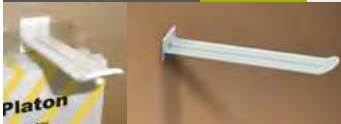
✱ 12.259 152mm x50 



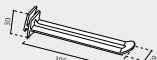
✱ 12.260 210mm x50 



## INSERT FLAT PRONG



✱ 12.269 61mm x50 



✱ 12.270 105mm x50 



✱ 12.271 130mm x50 

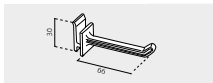


insert it  
into cardboard

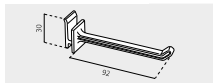
### INSERT PRONG



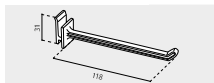
5 different  
sizes



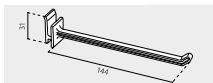
12.272 66mm x50



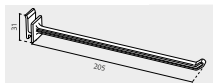
12.273 92mm x50



12.274 118mm x50

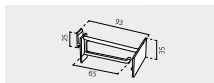


12.275 144mm x50



12.276 205mm x50

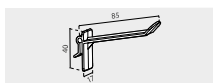
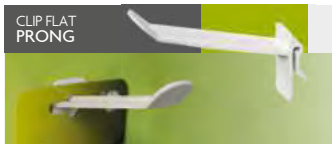
### INSERT PRONG WITH HOLDER



12.112 65mm x50

with  
price holder

### CLIP FLAT PRONG

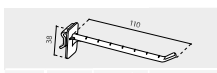


12.330 85mm x50

### CLIP PRONG

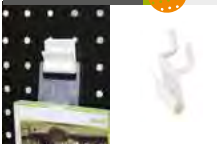


12.268 195mm x50



12.267 110mm x50

### PEGBOARD SIMPLE HOOK



#### INFORMATION

White plastic hook clip for attaching to pegboard panels. Ideal for hanging the strips.



PEGBOARD SIZE

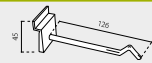
12.483 31x48mm x100

### SLAT WALL PRONG



#### INFORMATION

\*mm



White plastic hook clip for attaching to pegboard panels. Ideal for hanging strips.

SLATWALL LENGTH

12.111 126mm x50



# HOOKS | Pegboard Hooks | Prongs | Hooks Accessories

EN Various heavy-duty plastic hooks and prongs for pegboard and slat wall.

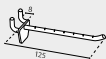
PT Diferentes ganchos em plástico para painéis perforados e laminados.

FR Divers types de broches a fixer sur fonds perforés et fonds à lames.

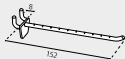
ES Diferentes ganchos de plástico para fondos perforado y fondos lama.

## SIMPLE OR DOUBLE PEGBOARD PRONG

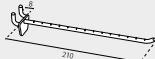
pegboard



12.255 125mm x50



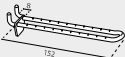
12.256 152mm x50



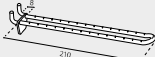
12.257 210mm x50



12.252 105mm x50



12.253 152mm x50



12.254 210mm x50

## MAGNETIC LOCK FOR SINGLE HOOK

NEW

### INFORMATION

Magnetic Lock is an affordable for Ø 6-8mm hooks, effective, and easy-to-use theft deterrent device.

LOCK MAX.HOOK DIAMETER

50.365  6mm x25

50.367  8mm x25

## DETACHER MINI STOPLOCK



### INFORMATION

Point key at bottom of magnetic lock to unlock.

DETACHER

50.368 x1



NEW

## HOOK END'S LOCK FOR EURO HOOK



### INFORMATION

These hooks are an affordable, effective, and easy-to-use theft deterrent device. It includes key lock. Cap covers the end of the hook. Ideal for retail shops, digital stores, cell phone stores, book stores, pharmacies or shopping malls.

ENDCAP SIZE

12.528 65x50x25mm x20

## HOOK LOCK FOR EURO HOOK



### INFORMATION

These hooks are an affordable, effective, and easy-to-use theft deterrent device. It includes key lock. Red color finish. Ideal for retail shops, digital stores, cell phone stores, book stores, pharmacies or shopping malls.

LOCK SIZE

12.529 46x42x15mm x20

## STOPLOCK FOR DOUBLE HOOK



### INFORMATION

These hooks are an affordable, effective, and easy-to-use theft deterrent device. It includes key lock. Black color finish. Ideal for retail shops, digital stores, cell phone stores, book stores, pharmacies or shopping malls.

LOCK SIZE

50.369  45x35mm x25

NEW




## PVC HANGER

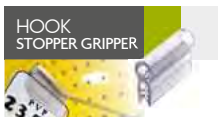
**INFORMATION** \*mm

This hanger is made of 0.04mm PVC and it has a front adhesive. It is ideal for hanging foam board, cardboard, posters on walls, ceiling or hanging from prongs.



STOPPER SIZE 

12.512 65x49mm x50 



## HOOK STOPPER GRIPPER

**INFORMATION** \*mm

This hook stopper is 32mm length and is made of transparent plastic and has a gripper for attaching promotion cards or price labels in front of the prongs.



STOPPER LENGTH

12.450 32mm x100 



## HOOK FRONT GRIPPER

**INFORMATION** \*mm

This front gripper is made of transparent plastic and it has a gripper for attaching price labels. It is ideal for placing in front of hooks or wire baskets.



FRONT SIZE

12.230 34x40mm x100 



## EURO HOOK LABEL HOLDER

**INFORMATION** \*mm

This label holder is made of transparent plastic and it has a space for inserting the promotion or the label price (27x31mm). It is ideal for the euro hooks.



EURO LABEL GRAPHIC SIZE

12.119 27x31mm x100 



## OVERARM LABEL HOLDER

**INFORMATION** \*mm

This overarm label holder is made of transparent plastic and it has a space for inserting the promotion card or label price (27x31mm).



OVERARM GRAPHIC SIZE

12.123 27x31mm x100 



## ROUND STOCK LIMITER

**INFORMATION** \*mm

This rounded stock limiter is ideal for reducing the stock amount on the prong and also, for keeping organized the products among the prongs.



ROUND DIAMETER

12.280 Ø26mm x100 




## SIMPLE HOOK STOCK LIMITER

**INFORMATION** \*mm

This simple stock limiter is ideal for reducing the stock amount on the prong and also, for keeping organized the products among the prongs.



SIMPLE SIZE

12.282 9x17mm x100 



## DOUBLE HOOK STOCK LIMITER

**INFORMATION** \*mm

The double hook limiter is ideal for reducing the stock amount on the prongs, for keeping organized the products, moving them to the front.



DOUBLE DIAMETER

12.281 26mm x100 



## MULTI HOOK STOCK LIMITER

**INFORMATION** \*mm

This stock limiter is ideal for reducing the stock amount on the prongs. And it is suitable for 4-8mm hooks.



MULTI HOOK SIZE

12.549 Ø4-8mm x50 

- EN** Adhesive labels, for placing and repairing the product in blister.
- FR** Etiquettes adhésives pour le placement ou réparation de produits.

- PT** Ganchos auto-adesivos para a exposição de produtos.
- ES** Etiquetas adhesivas, para colocar o reparar producto en blister.

## HANG TABS

### EUROSLOT


+450g

**INFO** \*mm

Euroslot hangtab has a 450g recommended max. weight.



EUROSLOT

✱ 12.357 x100 

### STANDARD


+110g

**INFO** \*mm

Standard hangtab has a 110g recommended max. weight.



STANDARD

✱ 12.358 x100 

### FLEXI


+230g

**INFO** \*mm

Flexi hangtab has a 230g recommended max. weight.



FLEXI

✱ 12.359 x100 

### HOOK


+120g

**INFO** \*mm

Hook hangtab has a 120g recommended max. weight.



HOOK

✱ 12.360 x100 

### EASY


+185g

**INFO** \*mm

Easy hangtab has a 185g recommended max. weight.



EASY

✱ 12.361 x100 

### NOVA


+400g

**INFO** \*mm

Nova hangtab has a 400g recommended max. weight.



NOVA

✱ 12.362 x100 

### FOLDING


+230g

**INFO** \*mm

Folding hangtab has a 230g recommended max. weight.



FOLDING

✱ 12.363 x100 

### QUICK


+400g

**INFO** \*mm

Quick hangtab has a 400g recommended max. weight.



QUICK

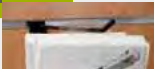
✱ 12.364 x100 

### USE


+400g

**INFO** \*mm

The Use hangtab has a 400g recommended max. weight.



USE

✱ 12.365 x100 


### HANGTAB

**INFO** \*mm

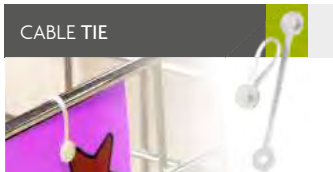
Ideal for repairing or reinforcing hangtabs.



REPAIR

✱ 12.366 x100 

## CABLE TIE



### INFORMATION

\*mm

This transparent cable tie holder is made of plastic and it is ideal for attaching price labels on wire shelves or promotion card to displays. It has 55mm length.



CABLE TIE	LENGTH	
*12.376	55mm	x100 

## ELASTIC CORD




### INFORMATION

\*mm

Ø2.5mm black elastic cord with metal ends, ideal for attaching promotion cards or price labels.



ELASTIC CORD	SIZE	
*12.502	Ø 2.5x100mm	x100 
*12.503	Ø 2.5x150mm	x100 
*12.504	Ø 2.5x200mm	x100 



### INFORMATION

Ø2.4mm ball chain available in 3 lengths. It is ideal for hanging posters, for poster rails or attaching promotion cards and price labels to the products.

## BALL CHAIN

Ø 2.4mm



BALL CHAIN	SIZE	
*12.489	Ø 2.4x100mm	x50 
*12.490	Ø 2.4x500mm	x50 
*12.491	Ø 2.4x1000mm	x50 

## PLASTIC STRAP



### INFORMATION



Flexible and easily adjustable strip. Ideal for attaching price labels to products.

PLASTIC STRAP	SIZE	
*12.497	3" (76.20mm)	x1000 
*12.498	4" (101.60mm)	x1000 
*12.499	5" (127.00mm)	x1000 
*12.500	6" (152.40mm)	x1000 
*12.501	7" (177.80mm)	x1000 

## PLASTIC BEADED STRAP



### INFORMATION



Flexible and easily adjustable beaded strap. Ideal for attaching price labels.

BEADED STRAP	SIZE	
*12.492	3" (76.20mm)	x1000 
*12.493	4" (101.60mm)	x1000 
*12.494	5" (127.00mm)	x1000 
*12.495	6" (152.40mm)	x1000 
*12.496	7" (177.80mm)	x1000 

## SIMPLE PLASTIC HOOK

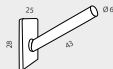
ADH



### INFORMATION

\*mm

25x28mm adhesive pad with a 43mm length hook. Simple Hook is ideal for presenting last minute add-on items, also for presenting gift cards or hanging posters or showcards on your display.



✱ 12.485    28x25x43mm    x100 

## DOUBLE CLIP HOOK

43mm length clip

ideal for cardboard, wire, glass, etc

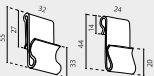
55mm length



### INFORMATION

\*mm

The double Clip Hook is suitable for cardboard, wire, glass... ideal for representing last minute add-on items or adding promotional products on your display. 2 sizes of clip available.



✱ 12.277    55x32mm    x100 

✱ 12.278    44x24mm    x100 

## COUPON HOLDER "S" HOOK




### INFORMATION

\*mm

Clip-on over cardboard displays. "S" Hook is ideal for presenting last minute add-on items, also for presenting gift cards or adding promotional products on your display.



✱ 12.074    Length: 29mm    x100 

## COUPON HOLDER "D" HOOK




### INFORMATION

\*mm

Clip-on over cardboard displays. "D" Hook is ideal for presenting last minute add-on items, also for presenting gift cards or adding promotional products on your display.

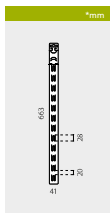


✱ 12.279    Length: 55mm    x100 

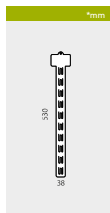


- EN** Ideal for a strategic placing of new products at points of sale.
- FR** Idéal pour des positionnements stratégiques de nouveaux produits.
- PT** Ideias para colocar ou destacar estrategicamente novos produtos.
- ES** Ideal para un posicionamiento estratégico de los nuevos productos.

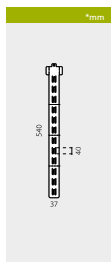
## CLIP STRIP



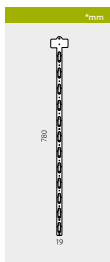
STRIP 663	HEIGHT	
 12.228	663mm	x50 



STRIP 530	HEIGHT	
 12.227	530mm	x50 





STRIP 540	HEIGHT	
 12.229	540mm	x50 



STRIP 780	HEIGHT	
 12.525	780mm	x50 



STRIP 620	HEIGHT	
 12.526	620mm	x50 



## STRIP CLIP HOOK

### INFORMATION \*mm



This Strip hook is 38mm long and it is made of steel. Strip Clip Hook is ideal for being used with the clip strips.



STRIP HOOK	LENGTH	
 12.157	38mm	x100 



# HANGING SOLUTIONS |



# Ceiling Hooks

**EN** Large range of hanging solutions with different attachment systems like magnets, adhesives, suction cups, clips, etc.

**FR** Système de fixation et suspension de visuels. S'adapte à tous types de surfaces telles que le métal, le verre, etc.

**PT** Gama de sistemas para a fixação e colocação de impressões suspensas. Adaptam-se a diferentes superfícies como o metal ou o vidro.

**ES** Distintos sistemas de fijación y colocación de gráficas "suspendidas". Se adaptan a diversas superficies como metal, vidrio, techos, etc.

### 360° ADHESIVE SQUARED BUTTON

**INFORMATION**

Squared button with rotating holder. Ideal for attaching wires from ceiling.

**360° SQUARED**

✦ 12.113    30x30mm    x100

### 360° ADHESIVE ROUNDED BUTTON

**INFORMATION**

25mm height button with rotating holder. Ideal for attaching wires from ceiling.

**360° ROUNDED**

✦ 12.384    Ø40mm    x100

### ADHESIVE SQUARED BUTTON

**INFORMATION**

Squared button with adhesive foam pad. Ideal for attaching wires from ceiling.

**SQUARED**

✦ 12.129    20x20mm    x100

### ADHESIVE RECTANGULAR BUTTON

**INFORMATION**

This button is ideal for attaching wires from ceiling.

**RECTANGULAR**

✦ 12.130    37x26mm    x100

### ADHESIVE ROUNDED BUTTON

**INFORMATION**

This Ø 18mm button is ideal for attaching wires from ceiling.

**ROUNDED**

✦ 12.301    Ø18mm    x100

### ADHESIVE OVAL BUTTON

**INFORMATION**

Oval 40x20mm adhesive button. It is ideal for attaching wires from ceiling.

**OVAL**

✦ 12.368    40x20mm    x100



## ADHESIVE STRAIGHT HOOK

\*mm




**INFORMATION**

Squared adhesive button and straight hook. Ideal for attaching wires from ceiling.

**STRAIGHT** 

 12.131	24x24mm	x100 
--	---------	--

## ADHESIVE RING BUTTON

\*mm




**INFORMATION**

25mm squared adhesive button with ring hook. Ideal for attaching to ceiling.

**RING** 

 12.447	25x25mm	x100 
--	---------	--

## CEILING VERTICAL CLIP

\*mm




**INFORMATION**



23x20mm adhesive button and straight hook. Ideal for attaching wires from ceiling.

**VERTICAL**

 12.132	23x20mm	x100 
--	---------	--

## CEILING HORIZONTAL CLIP


\*mm






**INFORMATION**


This button is ideal for attaching wires from ceiling.

**HORIZONTAL**



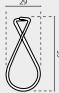
 12.133	20x20mm	x100 
--	---------	--

## FISH HOOK





**INFORMATION** \*mm


This silver clip with fish shape is ideal for holding promotions, offers, banner posters or signage with wire hooks from the ceiling.



**FISH CLIP**


 12.136	65x29mm	x100 
--	---------	--

## SPIDER HOOK





**INFORMATION** \*mm

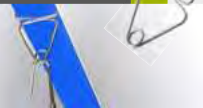
This wire clip, thanks to its shape is ideal for holding promotions, offers, for posters or signage with wire hooks from ceiling.



**SPIDER CLIP**


 12.135	75x20mm	x100 
--	---------	--

## BAT HOOK





**INFORMATION** \*mm

This silver clip with bat shape is ideal for holding promotions, offers, banner posters or signage with wire hooks from the ceiling.



**BAT CLIP**

 12.387	20x27mm	x100 
--	---------	--



# HANGING SOLUTIONS |



## Magnetic Hooks

EN Magnetic hooks for the attachment of graphics or signages.

FR Crochets magnétiques pour fixer des graphiques ou de la signalisation.

PT Ganchos magnéticos para suspender cartazes ou impressões.

ES Ganchos magnéticos para la sujeción de gráficas o cartelera.



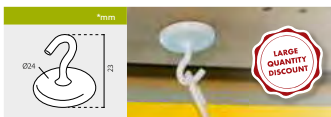
### ROUND BASE MAGNETIC HOOK

#### INFORMATION

This magnetic round base has rounded opening hook. With 5 sizes. They are suitable with any kind of metallic furniture. Ideal to hang promotions from the ceiling.



ROUND BASE	DIAMETER	WEIGHT SUPPORTED		
12.167	Ø25mm	<650 g	x25	
12.347	Ø32mm	<1600 g	x20	
12.348	Ø40mm	<2000 g	x10	
12.349	Ø50mm	<5100 g	x10	
12.350	Ø63mm	<5500 g	x10	

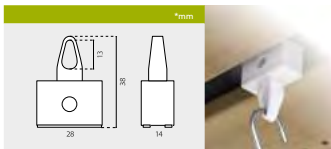


### ROUND BASE NEODYMIUM HOOK

#### INFORMATION

This Ø24mm white round base is made of steel with neodymium core. It's suitable with any kind of metallic surface thanks to its magnetic neodymium strength.

NEODYMIUM	DIAMETER	HEIGHT		
80403001	Ø24mm	23mm	x50	



### BRICK BASE MAGNETIC HOOK

#### INFORMATION

The 28x14mm magnetic base with 13mm high closed hook is suitable for attaching promotional banners or supermarket poster on any kind of metal surface.

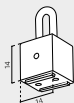
BRICK MAGNET	SIZE		
12.478	28x14x38mm	x50	





## SQUARE BASE MAGNETIC HOOK

\*mm



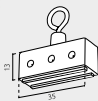
### INFORMATION

This magnetic cube with closed hook is ideal for hanging promotions from ceiling.

SQUARE	SIZE		
 12.165	14x14mm	x50 	

## RECTANGLE BASE MAGNETIC HOOK

\*mm



### INFORMATION

This double magnetic base is ideal for hanging promotions from ceiling.

RECTANGLE	SIZE		
 12.166	35x13mm	x50 	

## MINI OPEN MAGNETIC HOOK

\*mm



### INFORMATION

This small magnetic open hook is ideal for hanging promotions from ceiling.

OPEN MINI	SIZE		
 12.386	Ø15x15mm	x50 	

## MINI CLOSED MAGNETIC HOOK

\*mm



### INFORMATION

This small magnetic closed hook is ideal for hanging promotions from ceiling.

CLOSED MINI	SIZE		
 12.385	Ø15x15mm	x50 	

with adhesive



### INFORMATION

This double magnetic disc has adhesive on the back. It is ideal as fastener.

ADHESIVE DISC	SIZE			
 12.479	Ø9.5x0.75mm	x100 		
 12.480	Ø9.5x1.5mm	x100 		

## DOUBLE ADHESIVE MAGNETIC DISC



ADHESIVE DISC	SIZE			
 12.481	Ø8x0.75mm	x100 		
 12.482	Ø8x1.5mm	x100 		

## ADJUSTABLE METAL HOOK

### INFORMATION \* mm



Hook with an adjustable maximum length of 2000mm. Made of steel



### ADJUSTABLE LENGTH
















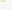

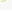


ADJUSTABLE	LENGTH		
 12.151	1000-2000mm	x50 	

## DOUBLE METAL HOOK

### INFORMATION

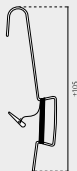
Bright galvanised double hook 10 sizes.

10 sizes available

DOUBLE	SIZE		
 12.141	100mm	x50 	
 12.142	150mm	x50 	
 12.143	200mm	x50 	
 12.144	300mm	x50 	
 12.145	400mm	x50 	
 12.146	500mm	x50 	
 12.147	600mm	x50 	
 12.148	750mm	x50 	
 12.149	900mm	x50 	
 12.150	1000mm	x50 	

## METAL HOOK WITH NYLON WIRE

### INFORMATION \* mm



This metal hook has a highly resistant nylon wire (1200mm length).



NYLON			
 12.137		x100 	

## EXTENDIBLE WIRE HOOK

### INFORMATION \* mm



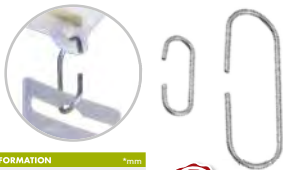
This hook is extendible thanks to its spring. Ideal for using with wire clips.



EXTENDIBLE	LENGTH		
 12.138	160 - 1300mm	x100 	
 12.139	210 - 1400mm	x100 	
 12.140	320 - 2500mm	x100 	

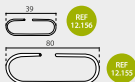


## "C" HOOK



### INFORMATION \*mm

This hook with "C" shape is ideal for hanging plastic strips. 2 lengths of hooks are available.



 12.155	80mm	x100 	
 12.156	39mm	x100 	



## STRIP CLIP HOOK



### INFORMATION \*mm

This Strip hook is made of steel and it is ideal for being used with the clip strips.



 12.157	38mm	x100 	
--	------	--	--


## "S" METAL HOOK



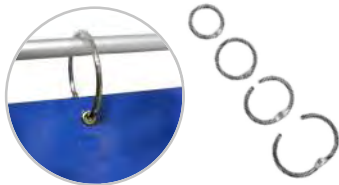
### INFORMATION \*mm

This hook has a "S" shape and it is made of steel. Available in 2 sizes. The "S" metal hook is ideal for hanging poster frames, showcards or promotional signage from ceiling or wire baskets.



 12.152	27mm   Ø1.1mm	x100 	
 12.154	120mm   Ø2mm	x100 	

## METAL RING



### INFORMATION

This metal ring with fast click closing is available in 4 diameters. It is very used as support for signage at supermarket or points of sale.



 12.160	Ø19mm	x100 	
 12.161	Ø25mm	x100 	
 12.162	Ø32mm	x100 	
 12.163	Ø38mm	x100 	



## 55mm "S" PLASTIC HOOK



### INFORMATION

\*mm

This white hook is 55mm length and is made of plastic. With a "S" shape, is ideal for hanging promotional signage in the point of sale.



\* 12.293

24x25mm

x100 

## 47mm "S" PLASTIC HOOK



### INFORMATION

\*mm

This white plastic hook is 47mm length. With a "S" shape, and a closed end, is ideal for hanging signage in the point of sale.

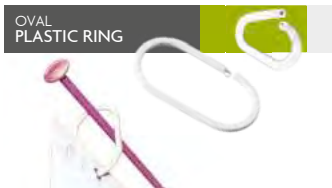


\* 12.377

24x47mm

x100 

## OVAL PLASTIC RING



### INFORMATION

\*mm

This oval plastic ring is available in 2 sizes. It is ideal for hanging promotional offers at supermarkets.



\* 12.380

50mm

x100 

\* 12.158

20mm

x200 

## ROUND PLASTIC RING



### INFORMATION

\*mm

These white plastic rings close easily for hanging signage in the point of sale. Featuring 2 diameters of ring available.



\* 12.159

Ø 15mm

x100 

\* 12.304

Ø 23mm

x100 

Ideal choice for discreetly displaying

0.5mm diameter

## NYLON LINE

5m nylon roll

### INFORMATION

This nylon line is ideal for attaching promotional signage from ceiling.

\* 12.373

5m

x100 



## METAL CLIP WITH HOLE



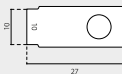
27mm length clip



made of metal

### INFORMATION

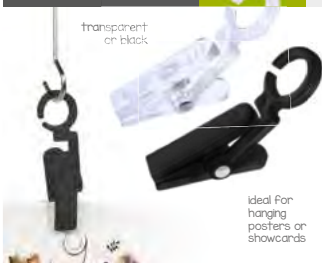
\*mm

This 27x10mm clip with hole features a strength clamp which is ideal for holding promotional banners, offer posters or shopping signage at supermarkets, stores or at any point of sale. It is made of metal.



 12.164    10x27mm    x100 

## RING CLIP



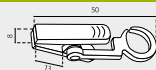
transparent or black


ideal for hanging posters or showcards

### INFORMATION

\*mm

Ring Clip is made of plastic and features an open ring for being used on wires. 2 colors of clip available (black and transparent). Ideal to hang removable signage.



 12.374     50x8mm    x100 

 12.375     50x8mm    x100 

## ROTATING HOOK CLAMP



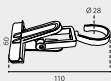
110mm length clamp



### INFORMATION

\*mm

This big transparent clamp features 2 rotary axes for displaying several angles of vision, also a strength 60mm clamp which is ideal for holding promotional banners, offer posters or shopping signage at supermarkets, stores or at any point of sale.



 12.475    60x110mm    x50 

## OPEN RING CLAMP

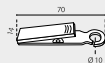




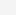
70mm length clamp




### INFORMATION

\*mm

Clip-on over cardboard displays. "D" Hook is ideal for presenting last minute add-on items, also for presenting gift cards or adding promotional products on your display.



 12.476     14x70mm    x50 

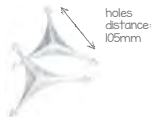
 12.477     14x70mm    x50 

- EN** The Mobile Kit consists of two plastic bases available in 3 or 4 sides for display advertising. Ideal for indoor use.
- FR** Formés par deux pièces de plastique, pour disposer 3 ou 4 visuels de publicité. Idéal pour une utilisation intérieure.

- PT** Gama de kits compostos por duas peças de plástico com 3 ou 4 lados para colocação de publicidade. Ideal para uso em interiores.
- ES** Kits formados por dos bases de plástico de 3 o 4 lados para la visualización de la publicidad. Ideal para uso en interiores.

## SMALL TRIARAMA MOBILE KIT


- EN** Graphic size: from an A4 size up to 400mm (200mm minimum).
- FR** Dimension de l'impression: à partir d'un A4 à 400mm (min. 200mm).
- PT** Tamanho da Impressão: desde um A4 até 400mm (min. 200mm).
- ES** Tamaño gráfica: desde un A4 hasta 400mm (mínimo 200mm).



Ø 5mm holes



SMALL

12.067 x2 

## MEDIUM TRIARAMA MOBILE KIT

- EN** Graphic size: from an A4 size up to 400mm (200mm minimum).
- FR** Dimension de l'impression: à partir d'un A4 à 400mm (min. 200mm).
- PT** Tamanho da Impressão: desde um A4 até 400mm (min. 200mm).
- ES** Tamaño gráfica: desde un A4 hasta 400mm (mínimo 200mm).



transparent plastic

Ø 5mm holes




MEDIUM TRIARAMA

\*mm



MEDIUM

12.235 x2 

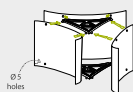
## BIG TRIARAMA MOBILE KIT

- EN** Graphic size: from 400mm up to 750mm (330mm minimum).
- FR** Dimension de l'impression: à partir de 400mm à 750mm (min. 330mm).
- PT** Tamanho da Impressão: desde 400mm até 750mm (min. 330mm).
- ES** Tamaño gráfica: desde 400mm hasta 750mm (mínimo 330mm).




BIG TRIARAMA

\*mm



BIG

12.234 x2 

## QUADRAMA MOBILE KIT

- EN** Graphic size: from an A4 size up to 400mm (200mm minimum).
- FR** Dimension de l'impression: à partir d'un A4 à 400mm (min. 200mm).
- PT** Tamanho da Impressão: desde um A4 até 400mm (min. 200mm).
- ES** Tamaño gráfica: desde un A4 hasta 400mm (mínimo 200mm).

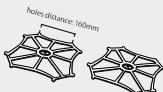


Ø 5mm holes




QUADRAMA

\*mm



QUADRAMA

12.236 x2 

## PEN CLAMP HOLDER



**INFORMATION** \*mm

This 12x14mm holder with adhesive base is suitable for standard pens or pencils. Ideal for the academies, schools or for the offices...



quick and simple use

PEN CLAMP	BASE SIZE		
 12.182	12x14mm	x100 	

## PEN GUIDE HOLDER



**INFORMATION** \*mm

This pen or cable white holder has a Ø20mm rounded adhesive base. It is also suitable for the most pens and pencils.



ideal as cable or pencil holder

PEN GUIDE	SIZE		
 12.448	Ø20x13mm	x100 	

## COILED TETHER

with 2 rings and 2 adhesive pads



### INFORMATION

A low cost, elastic holder for graphics.

TETHER	CABLE LENGTH		
 12.539	180-1000mm	x50 	

## CD HOLDER

**INFORMATION** \*mm



This CD holder has 3 different colors available.



CD HOLDER	COLOR	DIAMETER		
 12.486	<input type="checkbox"/> White	Ø30mm	x100 	
 12.487	<input type="checkbox"/> Clear	Ø30mm	x100 	
 12.488	<input type="checkbox"/> Black	Ø30mm	x100 	

- EN \*Magic tape\* adhesive buttons roll. Male or female.
- FR Boutons en \*magic tape\* adhésif, mâle ou femelle.
- PT Botões de \*magic tape\* adesivo. Macho ou fêmea.
- ES Botones adhesivos de \*magic tape\*. Macho/hembra.



### INFORMATION

- Easy to use, durable and strong
- Allows an easily changing of signage position.
- Ideal for paper crafts, cardboard or displays.



## ADHESIVE MAGIC TAPE DISCS



MAGIC T	DIAMETER		
 12.505	♂ 10mm	x1000 	
 12.506	♀ 10mm		

MAGIC T	DIAMETER		
 12.507	♂ 20mm	x1000 	
 12.508	♀ 20mm		

MAGIC T	DIAMETER		
 12.509	♂ 25mm	x1000 	
 12.510	♀ 25mm		

# SUCTION CUPS | Suction Cups

**EN** Suction Cups for the placement of advertising messages at points of sale. Ideal for glass or smooth surfaces.

**FR** Ventouses permettant la signalisation publicitaire dans les points de ventes. Idéal pour le verre et les surfaces lisses.

**PT** Ventosas para a suspensão de cartazes ou mensagens em pontos de venda. Ideias para colocar em vidros ou superfícies lisas.

**ES** Ventosas para colocación de publicidad y mensajes en los puntos de venta. Ideal para cristales o superficies lisas.

## SUCTION CUP WITH PLASTIC HOOK

\*mm



with plastic hook



### INFORMATION

With transparent plastic hook. Good adhesion due to the quality of the molding.

PLASTIC HOOK	DIAMETER	
 12.168	Ø30mm	x100 

## SUCTION CUP WITH METAL HOOK

\*mm



with removable metal hook



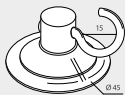
### INFORMATION

With removable metal hook. Ideal to use directly with the poster, showcard, etc...

METAL HOOK	DIAMETER	
 12.169	Ø 40mm	x100 

## DOUBLE SUCTION CUP WITH PLASTIC HOOK

\*mm



with plastic hook



### INFORMATION

With double Ø45mm suction cup for an reinforced attachment. For flat surfaces.

DOUBLE	DIAMETER	
 12.172	Ø45mm	x100 

## SUCTION CUP WITH SCREW

\*mm





with screw



### INFORMATION

Ø40mm diameter suction cup with removable screw for a reinforced fastening.

WITH SCREW	DIAMETER	
 12.388	Ø40mm	x100 



## SUCTION CUP WITH THUMBTACK



with thumbtack



**SUCTION CUP** \*mm

**DIAMETER**

12.170    Ø45mm    x100 

## DOUBLE SUCTION CUP WITH THUMBTACK



with thumbtack



**SUCTION CUP** \*mm

**DIAMETER**

12.171    Ø45mm    x100 

## DOUBLE SUCTION CUP WITH CUP



**INFORMATION** \*mm



This suction cup has a double suction for a reinforced fixing. With a front cup.

extra adhesion

**DOUBLE**    **DIAMETER**

12.472    Ø35mm    x100 

## DOUBLE SIDED SUCTION CUP



**INFORMATION** \*mm



This suction cup has a double suction for a reinforced fixing. With a front cup.

double-suction cup

**2-SIDED**    **DIAMETER**

12.470    Ø20mm    x100 

12.471    Ø30mm    x100 

## LATERAL GRIPPER SUCTION CUP



ideal to use directly with the signage




**INFORMATION**

Suction cup with lateral gripper. Ideal for price labels or promotions on shelving.


**LATERAL GRIP**    **DIAMETER**

12.200    Ø25mm    x100 

## FRONT GRIPPER WITH THUMBTACK




ideal to use directly with the signage




**INFORMATION**

Suction cup with front gripper. Ideal for price labels or promotions on shelving.

**FRONT GRIP**    **DIAMETER**

12.201    Ø25mm    x100 

12.473    Ø50mm    x100 



**EN** Gripper system used for holding, placement, binding and joining of signage at the point of sale. Wide range of applications.

**FR** Système de fixation pour une signalisation au point de vente. Plusieurs applications possibles.

**PT** Grappers com diferentes aplicações, para colocação em pontos de venda. Adaptam-se a qualquer tipo de suporte.

**ES** Sistema de Grappers para la sujección, colocación y unión de cartelaria en el punto de venta. Multitud de aplicaciones posibles.

## INFORMATION

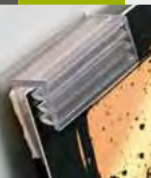
\*mm

This gripper fits into most of shelving profiles. Suitable as a front support on shelves. With transparent finish and a back adhesive foampad. With 3 widths available.



✱ 12.187	25mm	x100		
✱ 12.188	38mm	x100		
✱ 12.189	76mm	x100		

## FRONT ADHESIVE GRIPPER



## INFORMATION

\*mm

REF 12.190



REF 12.191



This gripper fits into most of shelving profiles. Ideal as a front support at sales line thanks to the hinge. 2 widths (25 - 75mm) are available.



✱ 12.190	25mm	x100		
✱ 12.191	75mm	x100		

## HINGED ADHESIVE GRIPPER




## INFORMATION

\*mm

This Shelf gripper fits into most of shelving profiles. It suitable for material of 15-20mm thickness. Ideal as a side support on shelves at sales line.



✱ 12.522	40mm	x100	
----------	------	------	---

## SHELF GRIPPER



## INFORMATION

\*mm

REF 12.193



REF 12.194



This gripper fits into most of shelving profiles. Ideal as a front support on shelves thanks to the hinge. 2 widths (25 - 75mm) are available.



✱ 12.193	25mm	x100	
✱ 12.194	75mm	x100	

## SHELF HINGED CLIP GRIPPER



## INFORMATION

\*mm

This transparent hinged gripper fits onto most of shelves profiles. It holds cards of 15-22mm thickness. It is suitable for using as a stopper support at sales line.



\* 12.523

30x20mm

x100



## SHELF HINGED GRIPPER

## INFORMATION

\*mm

This adjustable gripper fits onto most of shelves profiles. It is suitable as stopper support thanks to its adjustable viewing angle. Ideal to display messages, signs or price promotions.



\* 12.233

28x20mm

x100



## ADJUSTABLE CLIP GRIPPER



## INFORMATION

\*mm

This Clip Gripper fits onto label-holder profile. It is suitable for using as stopper support thanks its 20mm width Clip Gripper. Ideal to display messages, signs or promotion at the sales lines.



\* 12.195

20mm

x100



## CLIP GRIPPER

## INFORMATION

\*mm

Hinged clip fits onto any label-holder profile. It is suitable for using as a stopper support thanks to its hinge. Ideal to display signs, messages or price promotions at sales lines.



\* 12.192

40mm

x100



## HINGED CLIP GRIPPER

## INFORMATION

\*mm

This Spring Gripper is suitable for using as stopper support thanks to its 2 spring clips which fits onto label-holder profile. Ideal to display messages, signs or promotion at the sales lines.



\* 12.452

20x32mm

x100



## SPRING CLIP GRIPPER



## INFORMATION

\*mm

This side clip gripper is suitable as a side support on shelves, it is ideal for implementation of stoppers in the sales line.



\* 12.453

x100 

## SIDE CLIP STOPPER GRIPPER



## INFORMATION

\*mm

This wire gripper is suitable as a graphic support up to Ø10mm tubes, it is ideal for being used on wire baskets, or over pole structures at the point of sales.



\* 12.196

15x24mm

x100 

## WIRE GRIPPER



## INFORMATION

\*mm



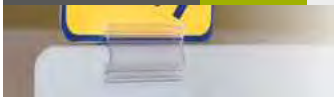
Arrowhead is available in 2 lengths. With its special gripper shape is ideal for attaching signage panels to another displaying surface.

\* 12.369

25mm

x100 

## ARROWHEAD GRIPPER

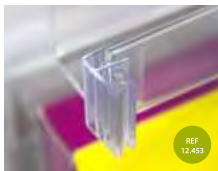


\* 12.370

38mm

x100 

REF 12.190



REF 12.453



REF 12.196



REF 12.195



REF 12.346



REF 12.233



## INFORMATION

\*mm

- 22x7x25mm, it takes up to 2mm thickness card.
- Clear PVC gripper ideal for joining cardboard displays, construction of mobiles or just for displaying promotions.



## "H" 180° GRIPPER



\* 12.197

22x25mm

x100 

## INFORMATION

\*mm

- 20x25mm, it takes up to 2mm thickness card.
- 60° angle connection.
- Clear PVC gripper ideal for joining cardboard displays, construction of mobiles or just for displaying promotions.



## "V" 60° GRIPPER



\* 12.371

20x25mm

x100 

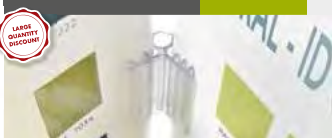
## INFORMATION

\*mm

- 22x25mm, it takes up to 2mm thickness card.
- 90° angle connection.
- Clear PVC gripper ideal for joining cardboard displays, construction of mobiles or just for displaying promotions.



## "L" 90° GRIPPER



\* 12.198

22x25mm

x100 

## INFORMATION

\*mm

- 25x25mm, it takes up to 2mm thickness card.
- 3 ways grip connection.
- Clear PVC gripper ideal for joining cardboard displays, construction of mobiles or just for displaying promotions.



## "Y" GRIPPER



\* 12.372

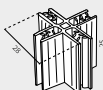
25x25mm

x100 

## INFORMATION

\*mm

- 28x25mm, it takes up to 2mm thickness card.
- 4 ways grip connection.
- Clear PVC gripper ideal for joining cardboard displays, construction of mobiles or just for displaying promotions.



## "X" GRIPPER



\* 12.199

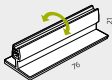
28x25mm

x100 

## HINGED GRIPPER

\*mm


REF  
12.382



REF  
12.202

### INFORMATION

Its hinged base protects your promotion card against shocks. It is ideal to display messages, signs or promotions at shelf profiles. 2 widths available (25-76mm).

 12.382	25mm	x100	
 12.202	76mm	x100	

## HINGED GRIPPER



## BASIC GRIPPER

\*mm

REF  
12.183



REF  
12.186



REF  
12.184



REF  
12.185



This basic gripper fits on any support. It has an adhesive back foam pad for an optimum attachment. There are 4 sizes available with transparent finish. Ideal for displaying signs, price labels, messages or for price promotions at sales lines.

 12.183	12x25mm	x100	
 12.184	12x75mm	x100	
 12.185	25x25mm	x100	
 12.186	25x75mm	x100	

## BASIC GRIPPER



## HIGH GRIPPER

\*mm



### INFORMATION

This adhesive gripper fits on any support. The extra height (15mm) increases the resistance of the grip. Ideal for displaying signs, price cards, messages or labels.

 12.520	20x75mm	x100	
--	---------	------	---

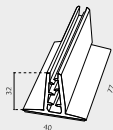
## HIGH GRIPPER



## INFORMATION

\*mm

This Wide Gripper fits on any kind of metallic surface. Its extra width (77mm) provides a solid attachment. It has an adhesive foam pad included. Ideal to display signs, messages or price promotions on shelves at sales lines. With transparent finish.



12.346 40x77mm x50

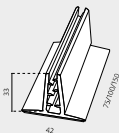
## WIDE GRIPPER



## INFORMATION

\*mm

Big Magnetic Gripper fits on any kind of metallic surface. It has a transparent finish. And features 3 widths available. The Big magnetic Gripper is ideal for displaying signs, price labels, messages or price promotions on shelves at sales lines.



12.455 75mm x50

12.456 100mm x50

12.457 150mm x50

## BIG MAGNETIC GRIPPER

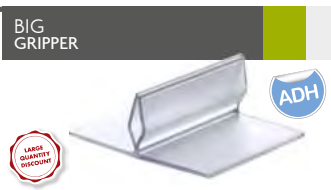


## INFORMATION

The extra size of the Big Gripper provides a solid fixation. It has an adhesive back foam pad for a better fixation. 3 sizes available.



## BIG GRIPPER



## BIG GRIPPER 50

\*mm



12.378 50mm x50

## BIG GRIPPER 100

\*mm



12.379 100mm x50

## BIG GRIPPER 150

\*mm



12.383 150mm x50



# CARDBOARD ACCESSORIES | Rivets | Screws

EN Screws and rivets made of plastic for the signage attachment.

PT Porca e parafuso em plástico para a fixação de impressões.

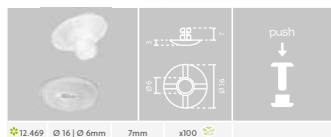
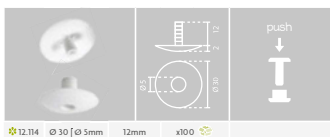
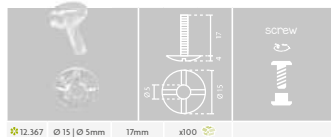
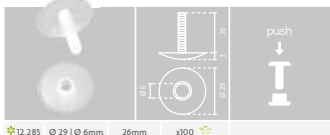
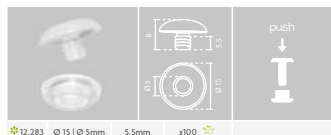
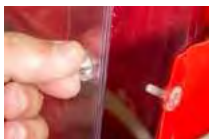
FR Visse et écrou en plastique pour la fixation sur le carton display.

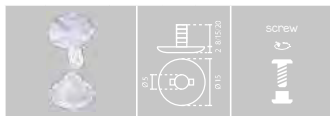
ES Tornillos y tuercas realizados en plástico para fijación de cartelería.




## INFORMATION

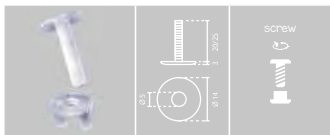
- We provide an excellent selection of fasteners, such as plastic bolts, nuts or screws for the signage attachment and other applications.

- Plastic rivet fasteners have numerous applications and come in a wide variety of styles, sizes, and configurations to accommodate different panel dimensions.

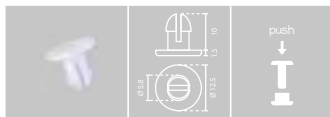




✱ 12.466	Ø 15   Ø 5mm	8mm	x100	
✱ 12.467	Ø 15   Ø 5mm	15mm	x100	
✱ 12.468	Ø 15   Ø 5mm	20mm	x100	



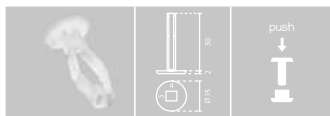
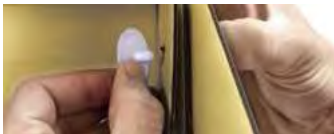
✱ 12.463	Ø 14   Ø 5mm	20mm	x100	
✱ 12.464	Ø 14   Ø 5mm	25mm	x100	



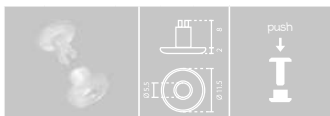
✱ 12.521	Ø 12.5   Ø 5.8mm	10mm	x100	
----------	------------------	------	------	---



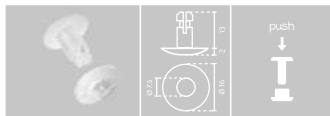
✱ 50.110	Ø 14.4   Ø 4.9mm	14.8mm	x100	
----------	------------------	--------	------	---



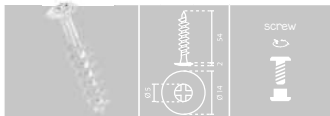
✱ 12.532	Ø 15   6x5mm	30/12mm	x100	
----------	--------------	---------	------	---




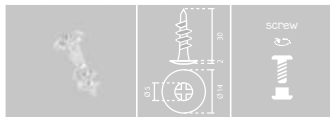
✱ 12.533	Ø 11.5   Ø 5.5mm	10mm	x100	
----------	------------------	------	------	---



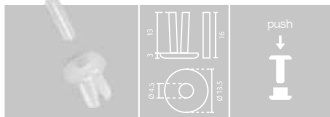
✱ 12.534	Ø 16   Ø 7.5mm	15mm	x100	
----------	----------------	------	------	---



✱ 12.535	Ø 14   Ø 5mm	56mm	x100	
----------	--------------	------	------	---



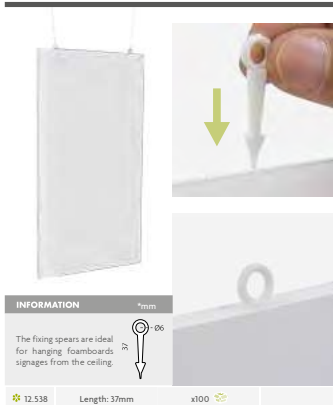
✱ 12.536	Ø 14   Ø 5mm	32mm	x100	
----------	--------------	------	------	---



✱ 12.537	Ø 13.5   Ø 4.5mm	16mm	x100	
----------	------------------	------	------	---

## FIXING SPEARS

Ideal For  
Foamboard



### INFORMATION

\*mm

The fixing spears are ideal for hanging foamboards signages from the ceiling.



✱ 12.538

Length: 37mm

x100 



EN Assembly connectors for the construction of cardboard displays.

FR Équerre en plastique pour le support des étagères en cartons.

PT Peças que se interligam para sustentar prateleiras de cartão.

ES Piezas ensamblables para la construcción de displays de cartón.

## CARDBOARD HOLDERS



### INFORMATION

\*mm

- Two interlocking pieces shelf support for bonding into corrugated cardboard.



- Designed for a solid and great supporting on shelf. Also allows an easy flat pack distribution.

- 62x26mm plate.  
27x42mm base.



### INFORMATION

\*mm

- Two interlocking pieces shelf support for bonding into corrugated cardboard.



- Designed for a solid and great supporting on shelf. Also allows an easy flat pack distribution.

- 64x43mm plate.  
27x66mm base.



### INFORMATION

\*mm

- Two interlocking pieces shelf support for bonding into corrugated cardboard.



- Designed for a solid and great supporting on shelf. Also allows an easy flat pack distribution.

- 62x47mm plate.  
26x66mm base.

✱ 12.517

x100 

✱ 12.516

x100 

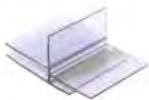
✱ 12.515

x100 

## CORRUGATED BRACKET CLIP

EN Transparent PVC clip designed for holding graphics and shelves.  
FR Support en pvc transparent pour fixation d'images et d'étagères.

PT Suporte de PVC para a fixação de imagens e prateleiras.  
ES Clip transparente de PVC para soporte de gráficas y baldas.




### INFORMATION

\*mm

- Clear PVC clip for quick and secure corrugated shelf construction by slotting into die cut holes.



✪ 12.514 x100 




### INFORMATION

\*mm

- Clear PVC clip for quick and secure, high strength corrugated shelf construction by slotting into die cut holes.



✪ 12.513 x100 

EN The plastic feet reinforces the cardboard displays.  
FR Pieds en plastique pour le renfort de display en carton.  
PT Pé de plástico para reforçar os displays de cartão.  
ES Patas de plástico para el refuerzo de los displays de cartón.

## PLASTIC DISPLAY CASTER



reinforce  
your display



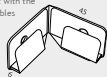
with adhesive



### INFORMATION

\*mm

- Castor rises the cardboard display to avoid the contact with the ground and also enables easy moving of the cardboard display.  
- Fast assembly with clip on bottom of cardboard display.



✪ 12.286 Simple x100 



### INFORMATION

\*mm

- Castor feet rises display from ground extending the life of usage.  
- It enables easy moving of cardboard display.  
- Easy assembly with clip on bottom of cardboard display.



✪ 12.518 Clip x100 



### INFORMATION

\*mm

- 50x50mm adhesive foam.  
- Castor rises the cardboard display 23mm from the ground and protects it from damaging. Also, enables easy moving of cardboard display.



✪ 12.287 Adhesive x100 

# IDENTIFICATION | ID Card Holders

**EN** Systems for personal identification with different formats and finishes available (magnetic, adhesives, safety pins...)

**FR** Systèmes d'identification personnelle avec différents médias et de finitions (adhésifs, des épingles de sûreté magnétiques...)

**PT** Sistemas para criação de crachás com diferentes formatos e acabamentos disponíveis (magnético, adesivo, alfinete...)

**ES** Sistemas para la identificación personal con diferentes soportes y acabados disponibles (magnéticos, adhesivos, imperdibles...)

with safety pin and card insert

## SAFETY PIN CARD HOLDER



### INFORMATION

This ID Pin fits card insert size: 40x12mm. Black finish.

40x12	SIZE
12.439	40x12mm x50

### INFORMATION

This ID Pin fits card insert size: 40x7mm. Grey finish.

40x7	SIZE
12.440	40x7mm x50

### INFORMATION

This ID Pin fits card insert size: 52x20mm. Grey finish.

52x20	SIZE
12.441	52x20mm x50

with adhesive Foam pads

## ADHESIVE CARD HOLDER



### INFORMATION

This ID safety Pin has adhesive front for holding cards.

30x12	SIZE
12.100	32x12mm x100

### INFORMATION

This 40mm ID safety Pin has adhesive front. Blue finish.

40x10	SIZE
12.101	40x10mm x100

### INFORMATION

This squared ID safety Pin has adhesive front for cards.

19x19	SIZE
12.102	19x19mm x100

## CLIP CARD HOLDER



### INFORMATION

Metallic clip is suitable for being used with lanyards.

CLIP 24x15	SIZE
12.442	24x12mm x50

### INFORMATION

This metallic-plastic clip has a safety pin for attachment.

CLIP 25x15	SIZE
12.443	25x15mm x50

### INFORMATION

Small dimensions metallic clip. Ideal for lanyards.

CLIP 10x27	SIZE
12.164	10x27mm x100





4 different clips  
for ID badge

## CLAMP CARD HOLDER



### INFORMATION

Clamp ID Holder is suitable for being used with lanyards. 2 colors (Blue or Black).

#### CLAMP HOLDER

12.435		x50
12.436		x50

### INFORMATION

Clamp ID Holder for being used with lanyards. Metallic finish or swing adjustment.

#### CLAMP HOLDER

12.437		x50
12.438		x50

## TRANSPARENT CLAMP CARD HOLDER



with metallic  
clamp and  
plastic  
holder

## MAGNETIC CARD HOLDER



### INFORMATION

ID Card Clamp with metallic clamp and transparent plastic holder. Ideal for lanyards.


#### TRANSPARENT

12.110	x100
--------	------

### INFORMATION

ID Card holder with safety pin and plastic blue clip. Ideal for being used with lanyards.

#### MAGNETIC

12.433	x50	
--------	-----	---

# IDENTIFICATION | ID Badges

## ACRYLIC ID BADGE 50x40mm

### INFORMATION

50x40mm acrylic badge with safety pin and clip.

50x40	GRAPHIC SIZE
12.390	50x40mm x10

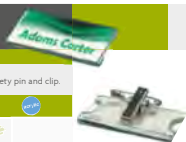


## ACRYLIC ID BADGE 60x25mm

### INFORMATION

60x25mm acrylic badge with safety pin and clip.

60x25	GRAPHIC SIZE
12.391	60x25mm x10



## FRAMED ID BADGE

### INFORMATION

Black plastic ID badge with safety pin.

SAFETY PIN	GRAPHIC SIZE
12.398	75x25mm x10
12.399	75x35mm x10



## MAGNETIC FRAMED ID BADGE

### INFORMATION

Black plastic ID badge with magnetic attachment.

MAGNETIC	GRAPHIC SIZE
12.396	75x25mm x10
12.397	75x35mm x10



## CURVED ID BADGE

### INFORMATION

Curved black plastic ID badge with safety pin.

SAFETY PIN	GRAPHIC SIZE
12.394	75x32mm x10
12.395	75x32mm x10



## MAGNETIC CURVED ID BADGE

### INFORMATION

Curved plastic ID badge with magnetic attachment.

MAGNETIC	GRAPHIC SIZE
12.392	75x32mm x10
12.393	75x32mm x10

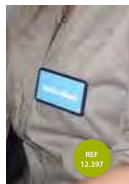
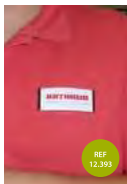
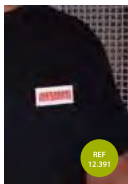
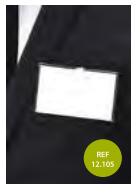


### INFORMATION

90x55mm transparent ID Card holder with safety pin and clip for attachment.

SAFETY PIN	GRAPHIC SIZE
12.105	90x55mm x50

## SAFETY PIN CARD HOLDER



## PVC CARD POCKET 95x55

INFO \* mm



95x55mm landscape PVC pocket with clamp which prevents damage clothing



95x55 CARD SIZE

12.107 95x55mm x50

## PVC CARD POCKET 74x100

INFO \* mm



74x100mm portrait PVC pocket for holding ID Card.



74x100 CARD SIZE

12.108 74x100mm x50

## PVC CARD POCKET A6

INFO \* mm



105x55mm portrait PVC pocket for holding ID card.



POCKET A6 CARD SIZE

12.109 A6-105x148mm x50

## HORIZONTAL CARD HOLDER

INFO

86x54mm insert pocket for holding landscape ID Cards. Ideal for being used with the lanyards.



HORIZONTAL CARD SIZE

12.106 86x54mm x10

## VERTICAL CARD HOLDER

INFO

55x85mm insert pocket for holding portrait ID Cards. Ideal for being used with the lanyards



VERTICAL CARD SIZE

12.548 55x85mm x10

## MULTIPOSITION ACRYLIC CARD CASE

INFO

Transparent 54x86mm insert pocket for holding portrait or landscape ID Cards. Ideal for lanyards



MULTIPOSITION CARD SIZE

12.413 54x86mm x10

## ACRYLIC PORTRAIT CARD POCKET

INFO \* mm

54x86mm insert black pocket for holding portrait ID Cards. Ideal for being used with the lanyards.



PORTRAIT CARD SIZE

12.411 54x86mm x10

## ACRYLIC LANDSCAPE CARD POCKET

INFO \* mm

86x54mm insert black pocket for holding landscape ID Cards. Ideal for being used with the lanyards.



LANDSCAPE CARD SIZE

12.412 86x54mm x10

INFO

With rotating clip for landscape or portrait format.



## VERTICAL / HORIZONTAL CARD HOLDER

VERTICAL / HORIZONTAL CARD SIZE

12.422 89x49mm x10



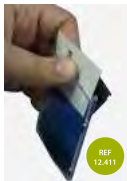
REF 12.413



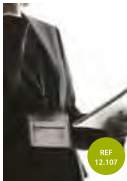
REF 12.422



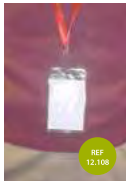
REF 12.411



REF 12.107

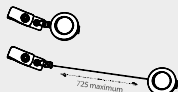


REF 12.108



## INFORMATION

\* mm



This retractable reel for holding ID cards is ideal for use as a card holder keychain. 2 colors available (grey or purple). It has a maximum length of 725mm extended.



## RETRACTABLE

12.103	Grey	x50
12.104	Purple	x50

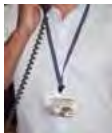
## INFORMATION

450mm length Lanyard with plastic clip for holding ID Cards. 4 colors available. Ideal for displaying ID cards, visitor passes or attaching other items.

PLASTIC



12.432	450x11mm	x50
--------	----------	-----



## RETRACTABLE CARD HOLDER



## PLASTIC CLIP ID LANYARD

4 colors available



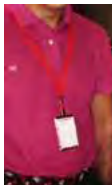
## INFORMATION

This 450mm length Lanyard has a metallic clip for holding ID Cards, also it features a metallic attachment to keep name cards facing forward and readable. This lanyard is perfect for any business or organisation that has visitors on a regular basis. Ideal for displaying ID cards, visitor passes or attaching other items. 4 colors available

METALLIC



12.429	450x11mm	x50
--------	----------	-----



## METALLIC CLAMP ID LANYARD

4 colors available



## INFORMATION

This 450mm Lanyard for ID Card has a plastic clip for holding ID Card, phone cord and also a metallic tension clip. This lanyard is perfect for any business or organisation that has visitors on a regular basis. Ideal for displaying ID cards, visitor passes or attaching other items. 4 colors available.

MULTI



12.431	450x11mm	x50
--------	----------	-----



## MULTIFUNCTION ID LANYARD

4 colors available

